

ONE HUNDRED AND FOURTEENTH YEAR



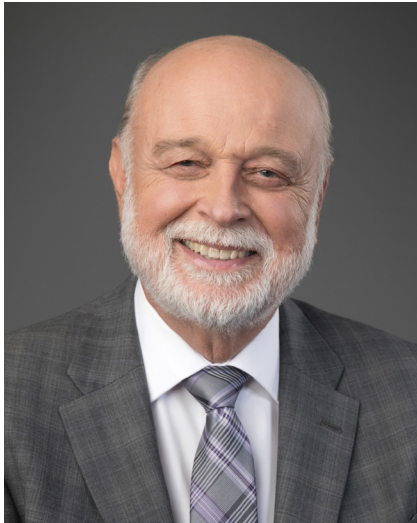
LOMA LINDA UNIVERSITY

two thousand and twenty



CONFERRING OF DEGREES
School of Public Health | Loma Linda, California

Message from the President



Congratulations to the Class of 2020.

One of the greatest joys experienced by our campus community is the opportunity to celebrate your academic excellence and personal achievements. This 114th commencement season marks the culmination of your study and professional preparation, which has equipped you to meet the next great adventures of your lives. You and those who have supported you are to be commended.

Now and for all time, you occupy a place among the alumni of this historic institution. I urge you always to model in your personal and professional life the excellence and vision, the courage and resilience, the passion and compassion that continue to shape and enhance our global reputation and legacy.

As you move beyond this weekend to the world of work or the pursuit of advanced degrees, I know that your commitment to our mission and values will be evident as your knowledge and skills are used to “continue the teaching and healing ministry of Jesus Christ—to make man whole.”

Now go with confidence wherever your dreams may lead you—questioning, learning, and challenging as you change our world for the better. I wish for you a satisfying and successful journey as you serve in the name and spirit of our gracious God.

A handwritten signature in black ink that reads "Richard H. Hart". The script is fluid and cursive.

Richard H. Hart, M.D., Dr.P.H.

Message from the Dean



You've made it! You've completed your degree. Now begins the most important part of your learning: transforming the lives of others with your new-found knowledge, your skills, and most of all, your compassion.

Graduates, you have a tremendous task ahead of you, especially during this remarkable time of COVID-19. We face incredible challenges locally and worldwide that will command the best you have to offer. You have already begun to address those challenges during your time here at LLU SPH. Many of you are already active in responding professionally to the novel corona virus pandemic. Continue to build on that foundation, as you move forward, to serve others.

Remember to pay attention to what really matters: your friends, your family, your faith. They cannot, they should not, be neglected. We rely on others now, more than ever before.

Graduates, the world is waiting for you, and needs all you have to offer. Most of all, you can offer hope.

In the words of Anthony Douglas Williams, "It is our duty to love the unloved, help the helpless, and bring hope to the hopeless."

Congratulations, Class of 2020!

Helen Hopp Marshak, PhD, MCHES

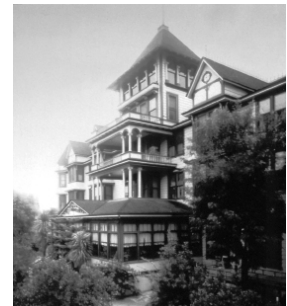
University History Highlights

Loma Linda University is part of the Seventh-day Adventist system of higher education that adheres to and promotes its vision—“Transforming lives through education, health care, and research”—and its motto—“To make man whole.”

Loma Linda University traces its beginnings back to 1905, when—through a series of divine providences—the University, starting as a nurses’ training school, was founded at Loma Linda, California, by the Seventh-day Adventist Church. The School of Nursing began in 1905. In 1909, the College of Medical Evangelists received its charter as a medical school with the express purpose of preparing physicians who could meet the needs of the whole person. Both schools emphasized the need for healthful living as a part of medical care—a revolutionary concept in 1905.

The University has steadily expanded its programs to meet the demands of a global environment. The original schools—Nursing and Medicine—have been joined by the Schools of Allied Health Professions, Behavioral Health, Dentistry, Pharmacy, Public Health, and Religion; and the Faculty of Graduate Studies. All the school programs are accredited by their respective accrediting bodies.

- 1905 Loma Linda Sanitarium and Nurses’ Training School (renamed School of Nursing in 1924)
- 1909 Institution named College of Medical Evangelists (CME), which included School of Medicine
- 1937 School of Medical Technology
- 1941 School of Physical Therapy
- 1948 School of Tropical and Preventive Medicine (reorganized as School of Public Health in 1967)
- 1953 School of Dentistry
- 1954 Graduate School (restructured as Faculty of Graduate Studies in 2005)
- 1961 College of Medical Evangelists renamed Loma Linda University
- 1962 Voted to consolidate the Schools of Medicine and Nursing on the Loma Linda campus
- 1966 Schools/Programs consolidated as the School of Health Related Professions, now known as School of Allied Health Professions
- 1967 Loma Linda University campus merged with La Sierra College
- 1968 Loma Linda University Hospital dedicated; renamed Loma Linda University Medical Center in 1970
- 1990 Loma Linda and La Sierra campuses became two separate universities
- 1997 Loma Linda University and Medical Center corporately linked together through Loma Linda University Adventist Health Sciences Center—LLUAHSC
- 2002 School of Pharmacy
- 2003 School of Science and Technology (restructured as School of Behavioral Health in 2012)
- 2005 LLU centennial celebration
- 2007 School of Religion
- 2015 Corporation name changed from Loma Linda University Adventist Health Sciences Center (LLUAHSC) to Loma Linda University Health (LLUH)



Today the original 1905 property is part of an expanding health sciences campus operated under the jurisdiction of Loma Linda University Health—which includes six Loma Linda University-named medical facilities: Medical Center, Children’s Hospital, Medical Center-East Campus, Surgical Hospital, Behavioral Medicine Center, and Medical Center-Murrieta; ten LLUH institutes; three LLUH-related research centers; and various school-related research centers.

After more than a century of service, the University remains committed to the vision of its founders and is sustained by its close association with the Seventh-day Adventist Church. The University is recognized as a leader in the field of health sciences education, research, and service—locally and internationally.

Through divine providence and guidance, Loma Linda University continues to fulfill its mission: To prepare health professionals to continue the teaching and healing ministry of the Master Teacher and Great Physician, Jesus Christ.



School of Public Health Candidates for Degrees

The listing of a candidate's name in the commencement program is presumptive evidence of graduation but is not to be regarded as conclusive.

The three-letter designation following a student's name (MAR, SEP, DEC) indicates the month in which the student completed his or her program, if other than May/June.

MASTER OF HEALTH-CARE ADMINISTRATION



Carla Daniela Delgado
BA Andrews University 2017
BBA Andrews University 2017
President's Award
Delta Omega Honor Society



Cassandra Romero
BS California State University, San Bernardino
2018
Randall Lewis Fellowship Award



Andrew Stephen Hamerly
BS Arizona State University, Main Campus
2018

MASTER OF PUBLIC HEALTH



Salome Tammire Abaata, MAR
epidemiology
BS University of Washington, Tacoma 2014



Melissa Rochelle Arbar
population medicine
BA Scripps College 2006
BS Johns Hopkins University 2011
DO Western University of Health Sciences 2016



Homoud Jazaa Alenizi, DEC
epidemiology
BACH/EQV University of Tabuk 2013



Manisa Bhuyan
epidemiology
MBBS Utkal University 2014
Charlie Liu Award
Randall Lewis Fellowship Award



Hatim Awedh Alotaibi, MAR
epidemiology
BS Shagra University 2014



Mary E. Brothers
nutrition
BS Bastyr University 2017
MAC Study



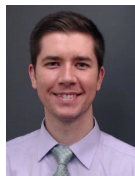
Darelle Agbayani Amores
epidemiology
BS California State University, San Bernardino
2017
Randall Lewis Fellowship Award
Dr. James L. Welch Scholarship



Amber Elise Burkey-Samdin
nutrition
BA University of California, Berkeley 2016
Delta Omega Honor Society
Atlantic Natural Food Scholarship in Honor of
Alejo Pizarro



Sara Eunice Cardenas Arriaga
nutrition
 BS California State Polytechnic University,
 Pomona 2017
*President's Circle Scholarship for Hispanic
 Students*



Richard Alan Compton
population medicine
 BS Brigham Young University 2012



Danya Melissa De La Riva Vargas, MAR
nutrition
 BACH/EQUIV Universidad de Navojoa 2017



Tanya Audrey Margaret Deporto
population medicine
 BS Vancouver Island University 2000
 PHD The University of British Columbia 2006
 MD The University of British Columbia 2012



Alisha M. Diaz
health education
 BA Northern Arizona University 2012



Neha S. Dixit, MAR
global health
 BA University of Nebraska at Lincoln 2017



Osinachi Miracle DomNwachukwu
epidemiology
 BS Azusa Pacific University 2017



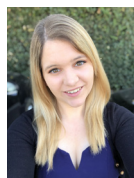
Sarina Christina Doyan, DEC
global health
 BS University of Miami 2014



Tori M. Dutchover
nutrition
 BS California Baptist University 2018
*Atlantic Natural Food Scholarship in Honor of
 Alejo Pizarro*



Erica Leigh Eddings
lifestyle management
 BA Oakwood University 2006
 BSN Belmont University 2013



Alyssa Noel Emerson
lifestyle management
 BS Western Washington University 2017



Ashley Jennifer Ennedy
population medicine
 BS University of California, San Diego 2012
 DO Western University of Health Sciences 2017



Andrea Lorena Franco, MAR
health education
 BA University of California, Riverside 2017
Delta Omega Honor Society



Karla Estudillo Fuentes
global health
 BA University of California, Los Angeles 2015
Selma Andrews Scholarship
Delta Omega Honor Society



Chelsea E. Fujitaki
nutrition
 BS University of Southern California 2010



Carolyn J. Fung
nutrition
 BS University of California, Santa Cruz 2014



Krystal George
nutrition
 BS Oakwood University 2017



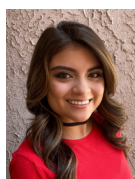
Alyx Cornelia Henry
nutrition
 BS Ohio Valley College 2017



Riwa Ghalayini
nutrition
 BS American University of Beirut 2014
Delta Omega Honor Society
Ella and Edmond Haddad International Student Scholarship



Heather M. Huang
nutrition
 BS University of California, Riverside 2014
Patricia K. Johnston Nutrition Scholarship



Diana Gonzalez
nutrition
 BS University of La Verne 2016



Mahiela Serein Inparaj
global health
 BS Towson University 2017



Dominic Jules Green
epidemiology
 BS Fitchburg State College 2016



Monica Lara
nutrition
 BS California State University, Long Beach 2014



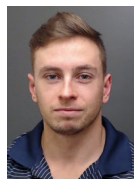
Zhila Hafezieh
nutrition
 BS Kharazmi University 2009
 MBS Kharazmi University 2012



Raeann Leal
lifestyle management
 BS California State University, Bakersfield 2016
Dean's Award
Delta Omega Honor Society



Alhassan Ahmed Hameedaldeem, MAR
global health
 BDS King Abdulaziz University 2011
Delta Omega Honor Society



Nolan Patrick Leavitt
epidemiology
 BS West Virginia University 2016



Emily Harima
nutrition
 BS Grand Valley State University 2017
Merritt C. Horning Award for Outstanding Research
Kathleen Zolber Academic Scholarship for Nutrition



Evan Douglas Lowe, DEC
population medicine
 BS Andrews University 2010
 MD Loma Linda University SM 2016



Monika Hany Heabaish
health education
 BS La Sierra University 2018



Emily Anne Machuca
nutrition
 BS California State Polytechnic University, Pomona 2018



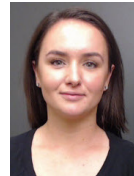
Denise Ermina Mark
nutrition
 BS Johnson & Wales University 2006



Mayabel Perez Acevedo
nutrition
 BS San Diego State University 2016
Callicot Student Support Scholarship



Raquel Aurora Martinez
nutrition
 BS California Baptist University 2018
Delta Omega Honor Society



Emily Ingalls Rhodes
nutrition
 BS Bridgewater College 2014



Nishita Joyce Matangi
global health
 BS Santa Clara University 2017
Community Outreach Project Scholarship



Olivia Rodriguez, DEC
global health
 BA University of California, Berkeley 2015



Douglas A. Mejia
epidemiology
 BA La Sierra University 2018
Randall Lewis Fellowship Award
Selma Andrews Scholarship



Debora Roman, MAR
epidemiology
 BS The University of Texas at San Antonio 2017
SPH Environmental & Occupational Health Scholarship



Salma Memon
global health
 BS University of California, Merced 2018



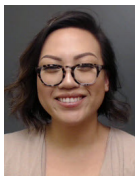
Shahnaj Binte Safi, MAR
epidemiology
 MBBS University of Dhaka 2013
Delta Omega Honor Society



Graciela Stephanie Molina, MAR
global health
 BA Southern Adventist University 2017



Lindsay M. Seibel, MAR
health education
 BS Walla Walla University 2017
Delta Omega Honor Society



Heidi Nguyen, MAR
health education
 BA San Jose State University 2016



Kemuel Ezekiel Telemaque
population medicine
 BS Andrews University 2013
 MD Loma Linda University SM 2019



Kristie Nguyen
epidemiology
 BS Oral Roberts University 2015
Dean's Award
Ruth White Outstanding Student Award
Randall Lewis Fellowship Award
Delta Omega Honor Society



Jennifer Elizabeth van Dyk
population medicine
 BA Walla Walla University 2016
Delta Omega Honor Society



Shane Waymond Wallace, MAR
epidemiology
 BS Lewis Clark State College 2017
Merritt C. Horning Award for Outstanding Research



Jiseung Yoon
population medicine
 BS Andrews University 2011
 MA Loma Linda University SR 2015
 MD Loma Linda University SM 2017



Jonquile Williams
global health
 BS Pacific Union College 2009
Randall Lewis Fellowship Award



David Zarka
global health
 JD Eötvös Loránd University 2018
Delta Omega Honor Society



Kaja Claire Rowe Williams
health education
 BS University of Toronto 2016
OEP Class of 1978 Scholarship

MASTER OF SCIENCE

In conjunction with the Faculty of Graduate Studies



Bryant Aristeo Brito
 BS California State Polytechnic University,
 Pomona 2017

DOCTOR OF PHILOSOPHY

In conjunction with the Faculty of Graduate Studies



Salem Omar Dehom, DEC
 BSPH University of Benghazi 2001
 MPH Loma Linda University PH 2011
Delta Omega Honor Society

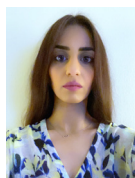
Dissertation: The Association between Ambient Air Pollution and Cardiovascular Mortality in Renal Transplant Recipients

DOCTOR OF PUBLIC HEALTH



Duaa Abdullah Alammari, MAR
health policy and leadership
 MA University of California, San Diego 2012

Dissertation: The Relationship between Electronic Health Records and Clinical Quality Measures in Ambulatory Health Care in the United States



Danyah A. Aldailami

health policy and leadership

BSE Umm Al-Qura University 2009

MHA University of La Verne 2012

Dissertation: Fall Related Injuries and Fatalities among the Elderly in the U.S.



Vanessa Lee Ayer Miller

health education

BS Tulane University 2003

MS New York Medical College 2005

MS Texas A & M University 2016

Delta Omega Honor Society

Dissertation: Caregiver Participation in the Development of a Mobile Application to Support Children with Congenital Heart Disease



Maham Mahmood Chaudhry, SEP

health policy and leadership

BS University of California, Los Angeles 2003

MPH California State University, Northridge 2008

Delta Omega Honor Society

Dissertation: Associations of Mental Health, Structural Barriers and Health Services among Adults



Lesley-Ann Simone Foster-Nicholas

nutrition

BS The University of the West Indies, St Augustine 2002

MPH Loma Linda University PH 2011

Dean's Award

Willard and Irene Humpal Award

Delta Omega Honor Society

Dissertation: Reproducibility and Validity of a Food Frequency Questionnaire in the Adult Population of Trinidad and Tobago



Marina Ezzat Gettas, DEC

health policy and leadership

BA University of California, Riverside 2011

MPH University of Southern California 2014

Dissertation: Effects on Mental Illness on Healthcare Utilization amongst Adults Living with Diabetes Mellitus in the United States



Cynthia A. Ogolla Jean-Baptiste

health education

BS Florida State University 2010

MPH University of South Florida 2013

MA Loyola University Chicago 2015

Joyce W. Hopp Scholar's Fund

Doctoral Project: Cross-Cultural Assessment of Stressful Life Events and the Influence of Social Capital



Tony Raymond Jehi, SEP

nutrition

BS University of Balamand 2010

MS Northeastern University 2013

Delta Omega Honor Society

Dissertation: Omega-3 Index, Red Blood Cell Membrane Fatty Acids, and Walnut Consumption and Association with Heart Disease Risk Factors in Elderly Participants



Elena Sarona Krafft

health education

BS California State University, San Bernardino 2011

MPH California State University, Fullerton 2014

Delta Omega Honor Society

Dissertation: Longitudinal Study of Job Control, Job Stress, Spiritual Meaning and Healthcare Utilization among Older Adults



Leo Maypa Langga, DEC

health policy and leadership

BS Loma Linda University AH 1988

MBA Loma Linda University PH 2007

Dissertation: Meaningful Ventilator Alarms in a Pediatric Intensive Care Unit



Adrienne Cecilia Moore, DEC

health education

BBA American InterContinental University, Online 2006

MBA American InterContinental University, Online 2007

Dissertation: Body Weight Perception Predictors and Trends: A 20-Year Longitudinal Study



Catherine Joy Domingo Oms

preventive care

BS California State University, San Bernardino 2002

MPA Loma Linda University AH 2007

Dissertation: Pickleball: A Physical Activity Intervention in Public Health



Katherine Diane Palacios

health education

BS Southern Adventist University 2014

MPH Andrews University 2017

Dean's Award

The SPH Stout Family Scholarship

Doctoral Project: The Association of ACEs, Neuroticism, Sabbath Observance, Religious Coping, and Life Satisfaction



Majed Ramadan, MAR

health policy and leadership

BA University of Redlands 2013

MPH Loma Linda University PH 2015

Merritt C. Horning Award for Outstanding Research

Dissertation: Examining the Association between Marijuana Use and Health Behaviors that are among Leader Contributor with Poor Health



Rochelle Rose Tuttle, SEP

health education

BA University of California, Irvine 2009

MPH Loma Linda University PH 2012

Dissertation: Assessment of Diabetes Self-Care, Self-Efficacy, Health Literacy and Quality of Life among Native American Populations



Regina Gale Ude, MAR

health education

BS Southern University And A & M College 1983

MBA University of Phoenix, Phoenix Campus 1996

MS California State University, San Bernardino 2010

Dissertation: Long-Term Abstinence of Smoking: The Freedom from Tobacco Program Quality Improvement Project



Michael Louis Vestino, SEP

health policy and leadership

BS University of La Verne 2006

MHA University of La Verne 2007

MA University of Southern California 2013

Dissertation: Factors Influencing Career Advancement: Study of Service Workers in a Southern California Hospital



THE GOOD SAMARITAN

The Good Samaritan, the four-figure sculpture located on the mall of Loma Linda University, is a representation of the parable told by Jesus in Luke 10:30–37. It was sculpted by Alan Collins and dedicated and unveiled at Loma Linda University on May 31, 1981.

The sculpture speaks eloquently of the compassionate practice of the healing arts and of our mission—“to continue the teaching and healing ministry of Jesus Christ”—and of the motto of this health sciences University—“To make man whole.”

The Good Samaritan has been incorporated into the diploma as a screened background since 2006.