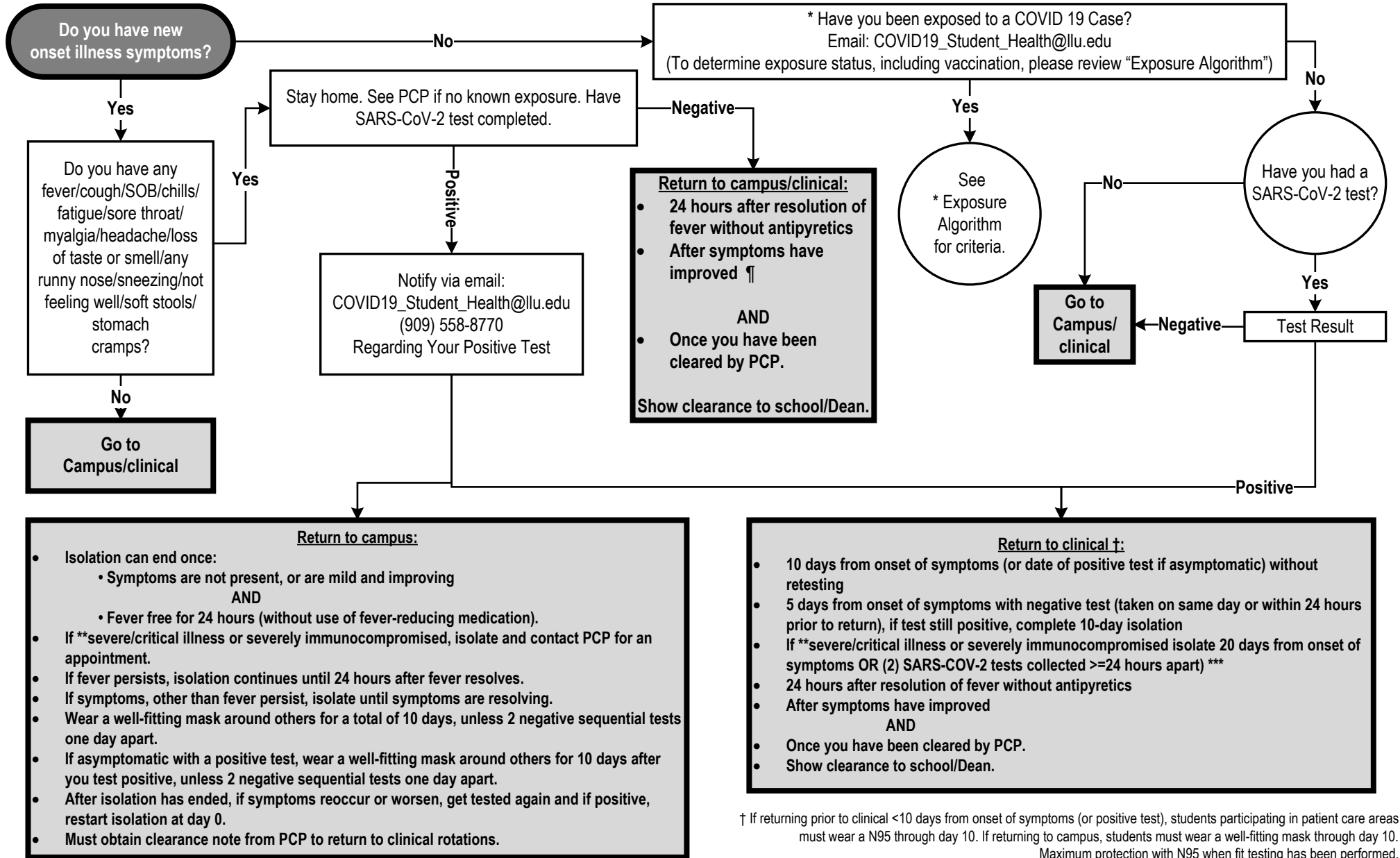


# VISITING CLINICAL STUDENTS

## LLU STUDENT RETURN-TO-CAMPUS/CLINICAL CRITERIA (ALL SITES) – UPDATED JANUARY 2024 (vs. 13)

### SYMPTOMS, EXPOSURES, & TESTING



¶¶ If symptomatic and have a negative antigen test, it is recommended that you follow-up with a PCR test

† If returning prior to clinical <10 days from onset of symptoms (or positive test), students participating in patient care areas must wear a N95 through day 10. If returning to campus, students must wear a well-fitting mask through day 10. Maximum protection with N95 when fit testing has been performed.

\* See exposure algorithm "Exposure/Quarantine Guidance (For All Visiting Students)" <https://home.llu.edu/covid-19-visiting-students>

\*\* Illness severity defines as: <https://www.cdc.gov/coronavirus/2019-ncov/need-extra-precautions/people-with-medical-conditions.html>

\*\*\* Either Antigen test or NAAT can be used