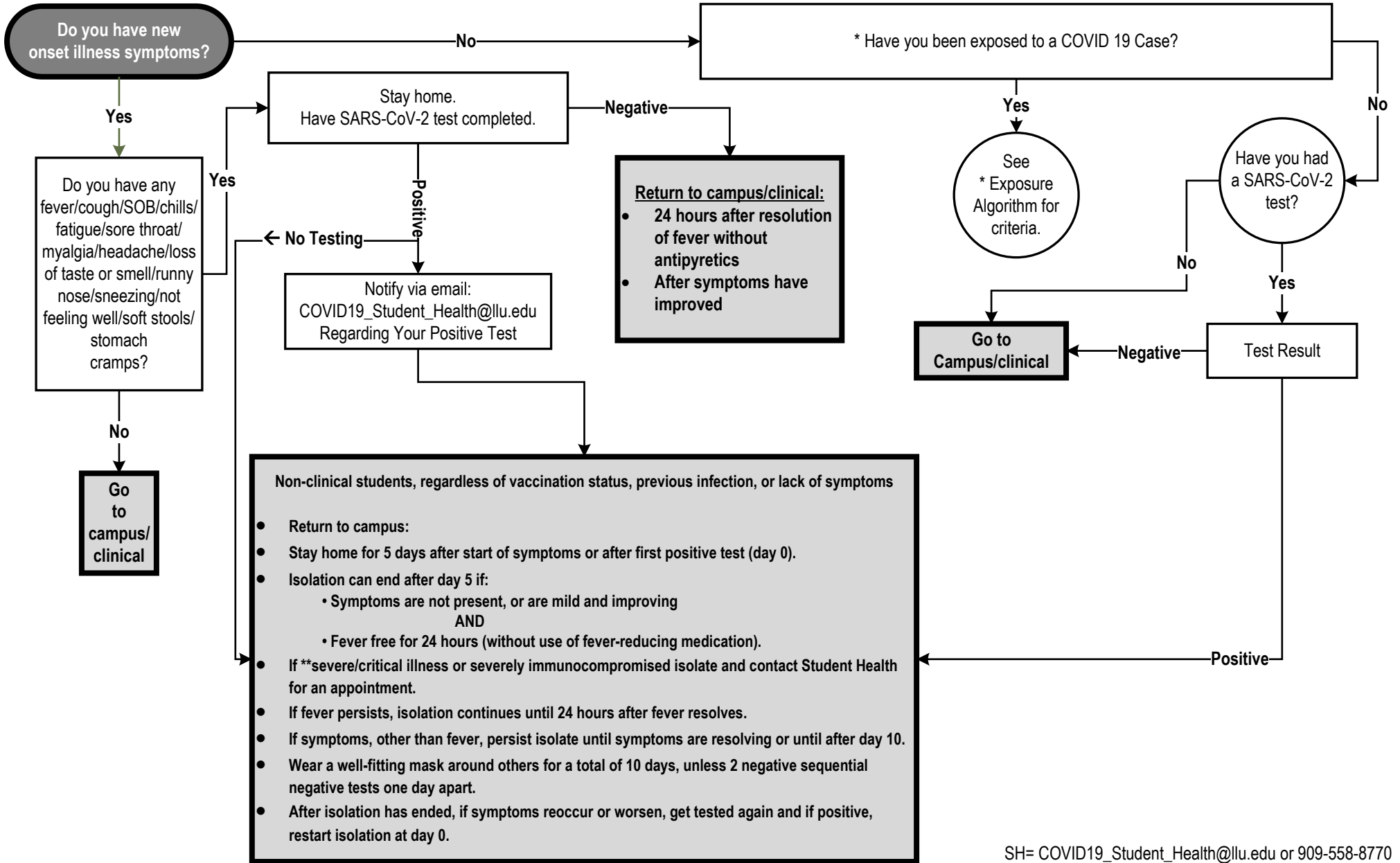


NON-CLINICAL STUDENTS
LLU STUDENT RETURN-TO-CAMPUS CRITERIA – UPDATED MARCH 8, 2023 (vs. 5)
SYMPTOMS, EXPOSURES & TESTING



SH= COVID19_Student_Health@llu.edu or 909-558-8770

* See exposure algorithm "Exposure/Quarantine Guidance (For All Students)"

<https://home.llu.edu/campus-and-spiritual-life/student-health-service/covid-19-student-guidelines>

** Illness severity defines as: <https://www.cdc.gov/coronavirus/2019-ncov/need-extra-precautions/people-with-medical-conditions.html>